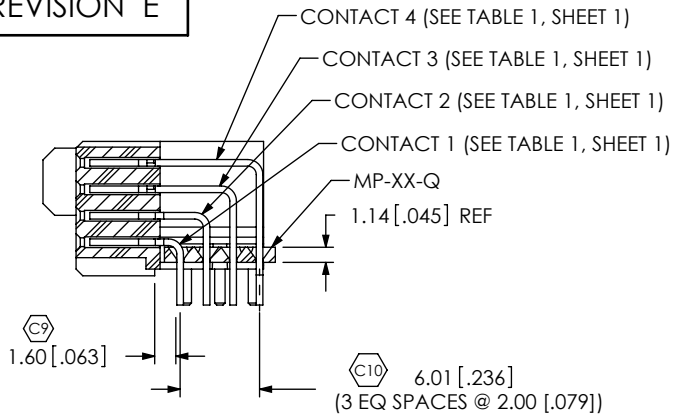


REVISION E



SECTION "C"-"C"

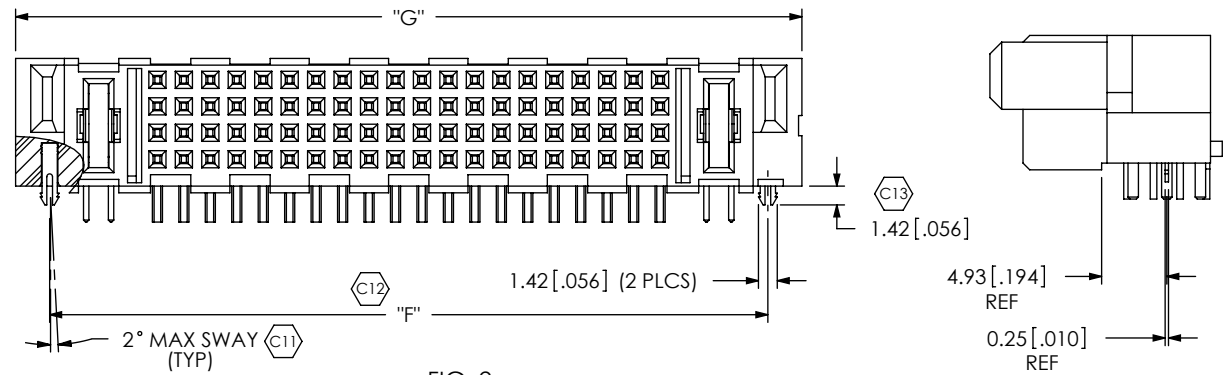


FIG. 2
MPSC-01-80-01-01-01-X-RA-LC SHOWN
(SAME AS FIG. 1, UNLESS OTHERWISE STATED)

FIG. 3
MPSC-02-80-02-01-01-X-RA-LC SHOWN
(SAME AS FIG. 1, UNLESS OTHERWISE STATED)

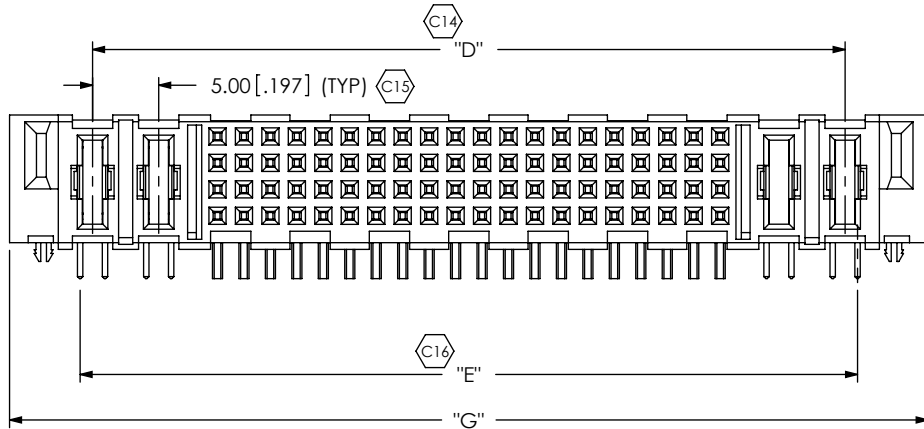


FIG. 4
MPSC-00-24-H4-01-01-X-RA-LC SHOWN
(SAME AS FIG. 1, UNLESS OTHERWISE STATED)
****NOT RELEASED**

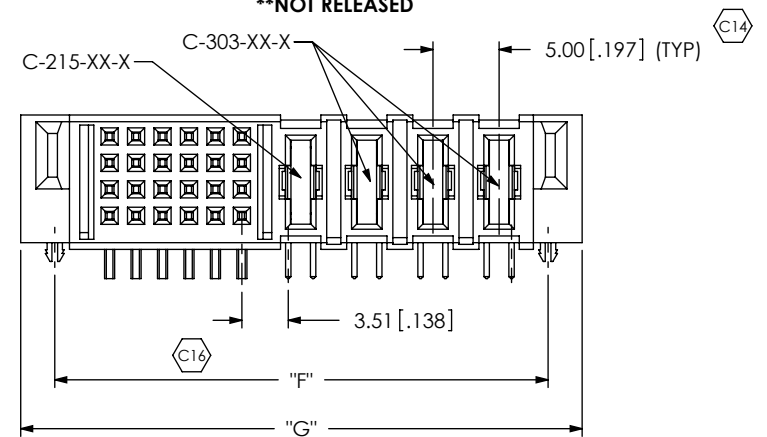


TABLE 2

PART NUMBER	BODY	"B" OAL-SD	"C"	"D"	"E"	"F"	"G"	"H"
MPSC-01-80-01-XX-XX-X-RA-XX	MPS-02-RA-80-XX	64.52 [2.540]	58.17 [2.290]	46.89 [1.846]	48.77 [1.920]	54.29 [2.137]	59.44 [2.340]	19
MPSC-02-80-02-XX-XX-X-RA-XX	MPS-04-RA-80-XX	74.52 [2.934]	68.17 [2.684]	56.89 [2.240]	58.77 [2.314]	64.29 [2.531]	69.44 [2.734]	19
MPSC-01-24-01-XX-XX-X-RA-XX	MPS-02-RA-24-XX	36.52 [1.438]	30.17 [1.188]	18.89 [0.744]	20.77 [0.818]	26.29 [1.035]	31.44 [1.238]	5
MPSC-02-24-02-XX-XX-X-RA-XX	MPS-04-RA-24-XX	46.52 [1.831]	40.17 [1.581]	28.89 [1.137]	30.77 [1.211]	36.29 [1.429]	41.44 [1.631]	5
MPSC-02-16-02-XX-XX-X-RA-XX	MPS-04-RA-16-XX	62.52 [2.461]	56.17 [2.211]	44.89 [1.767]	46.77 [1.841]	52.29 [2.059]	57.44 [2.261]	3
MPSC-00-24-X3-XX-XX-X-RA-XX	MPS-03-RA-24-XX-PS	42.52 [1.674]	36.17 [1.424]	N/A	N/A	32.29 [1.271]	37.44 [1.474]	5
MPSC-00-24-X4-XX-XX-X-RA-XX	MPS-04-RA-24-XX-PS	47.52 [1.871]	41.17 [1.621]	N/A	N/A	37.29 [1.468]	42.44 [1.671]	5
MPSC-00-20-X3-XX-XX-X-RA-XX	MPS-03-RA-20-XX-PS	40.52 [1.595]	34.17 [1.345]	N/A	N/A	30.29 [1.193]	35.44 [1.395]	4
MPSC-00-20-X4-XX-XX-X-RA-XX	MPS-04-RA-20-XX-PS	45.52 [1.792]	39.17 [1.542]	N/A	N/A	35.29 [1.389]	40.44 [1.592]	4
MPSC-00-16-X3-XX-XX-X-RA-XX	MPS-03-RA-16-XX-PS	38.52 [1.517]	32.17 [1.267]	N/A	N/A	28.29 [1.114]	33.44 [1.317]	3
MPSC-00-16-X4-XX-XX-X-RA-XX	MPS-04-RA-16-XX-PS	43.52 [1.713]	37.17 [1.463]	N/A	N/A	33.29 [1.311]	38.44 [1.513]	3
MPSC-00-12-X3-XX-XX-X-RA-XX	MPS-03-RA-12-XX-PS	36.52 [1.438]	30.17 [1.188]	N/A	N/A	26.29 [1.035]	31.44 [1.238]	2
MPSC-00-12-X4-XX-XX-X-RA-XX	MPS-04-RA-12-XX-PS	41.52 [1.635]	35.17 [1.385]	N/A	N/A	31.29 [1.232]	36.44 [1.435]	2

PROPRIETARY NOTE

THIS DOCUMENT CONTAINS INFORMATION CONFIDENTIAL AND PROPRIETARY TO SAMTEC, INC. AND SHALL NOT BE REPRODUCED OR TRANSFERRED TO OTHER DOCUMENTS OR DISCLOSED TO OTHERS OR USED FOR ANY PURPOSE OTHER THAN THAT WHICH IT WAS OBTAINED WITHOUT THE EXPRESSED WRITTEN CONSENT OF SAMTEC, INC.

DO NOT SCALE DRAWING

SHEET SCALE: 1.75:1



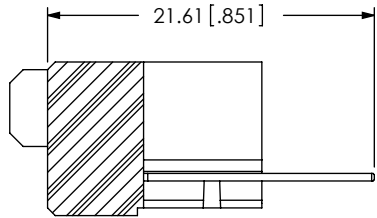
520 PARK EAST BLVD, NEW ALBANY, IN 47150
PHONE: 812-944-6733 FAX: 812-948-5047
e-Mail: info@SAMTEC.com code 55322

DESCRIPTION:
RA MINI-POWER W/ SIGNAL SOCKET

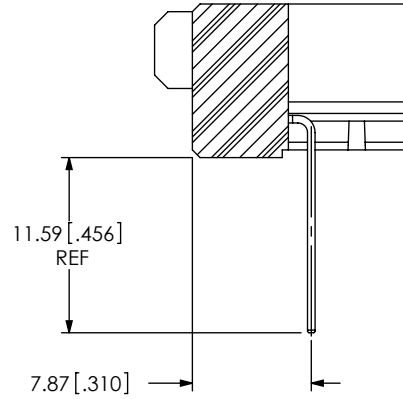
DWG. NO.
MPSC-XX-XX-XX-01-XX-X-RA-XX

BY: BRATCHER 2/20/2007 SHEET 2 OF 4

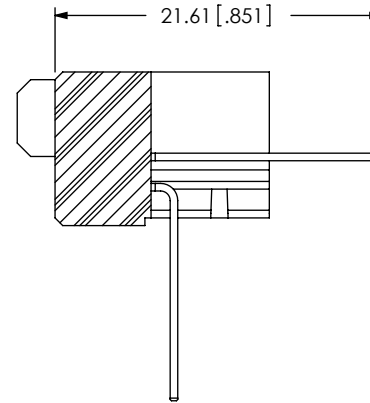
IN-PROCESS 1
FILL C-79-XXX-X ROW 1



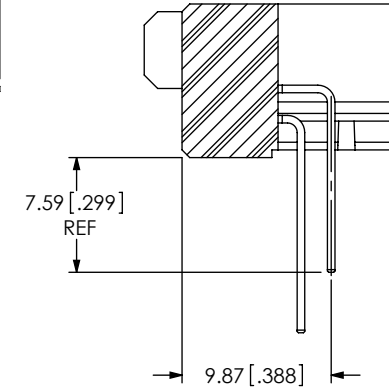
IN-PROCESS 2
BEND ROW 1



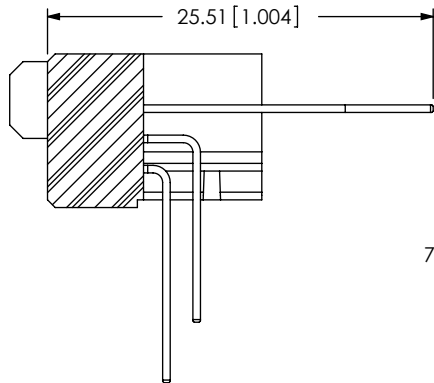
IN-PROCESS 3
FILL C-79-XXX-X ROW 2



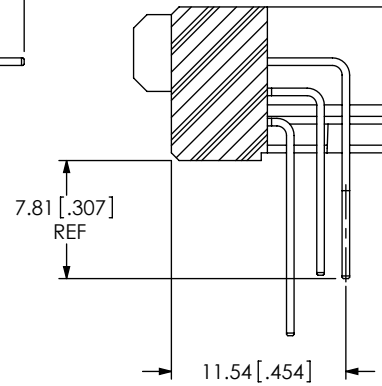
IN-PROCESS 4
BEND ROW 2



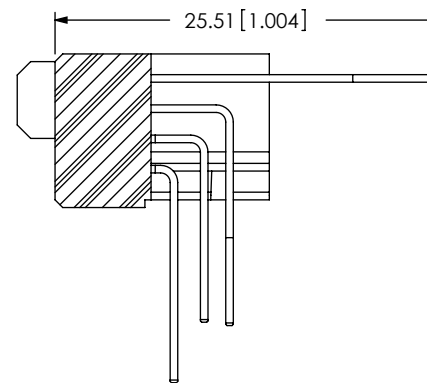
IN-PROCESS 5
FILL C-79-XXX-X ROW 3



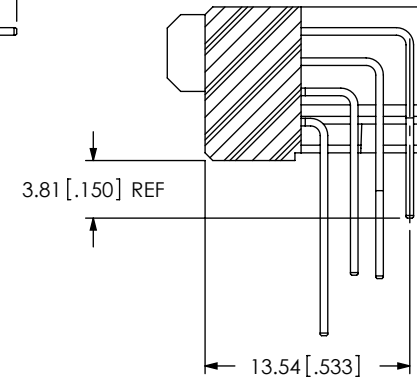
IN-PROCESS 6
BEND ROW 3



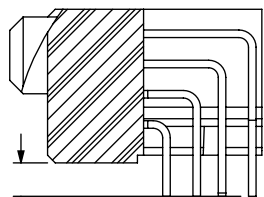
IN-PROCESS 7
FILL C-79-XXX-X ROW 4



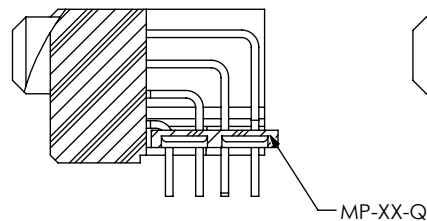
IN-PROCESS 8
BEND ROW 4



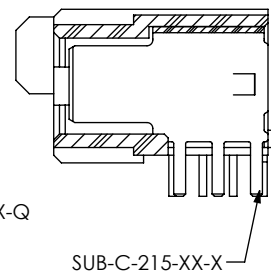
IN-PROCESS 9
SHEAR



IN-PROCESS 10
ADD MP-XX-Q



IN-PROCESS 11
FILL SUB-C-215-XX-X



"A" ±0.25 [0.010]
(SEE TABLE 1, SHT 1)



PROPRIETARY NOTE

THIS DOCUMENT CONTAINS INFORMATION CONFIDENTIAL AND PROPRIETARY TO SAMTEC, INC. AND SHALL NOT BE REPRODUCED OR TRANSFERRED TO OTHER DOCUMENTS OR DISCLOSED TO OTHERS OR USED FOR ANY PURPOSE OTHER THAN THAT WHICH IT WAS OBTAINED WITHOUT THE EXPRESSED WRITTEN CONSENT OF SAMTEC, INC.

DO NOT SCALE DRAWING

SHEET SCALE: 2:1

samtec

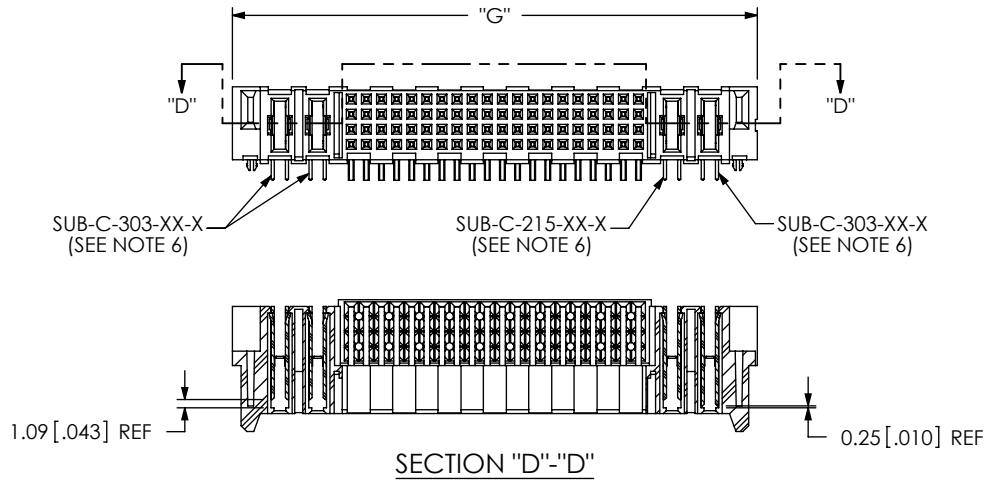
520 PARK EAST BLVD, NEW ALBANY, IN 47150
PHONE: 812-944-6733 FAX: 812-948-5047
e-Mail: info@SAMTEC.com code 55322


DESCRIPTION:
RA MINI-POWER W/ SIGNAL SOCKET

DWG. NO.
MPSC-XX-XX-XX-01-XX-X-RA-XX

BY: BRATCHER 2/20/2007 SHEET 3 OF 4

FIG. 5
 HOT SWAP OPTION
 MPSC-02-80-H2-01-01-X-RA-LC SHOWN
 (SAME AS FIG. 1, UNLESS OTHERWISE STATED)
 ** = NOT RELEASED



<p>PROPRIETARY NOTE THIS DOCUMENT CONTAINS INFORMATION CONFIDENTIAL AND PROPRIETARY TO SAMTEC, INC. AND SHALL NOT BE REPRODUCED OR TRANSFERRED TO OTHER DOCUMENTS OR DISCLOSED TO OTHERS OR USED FOR ANY PURPOSE OTHER THAN THAT WHICH IT WAS OBTAINED WITHOUT THE EXPRESSED WRITTEN CONSENT OF SAMTEC, INC.</p> <p>DO NOT SCALE DRAWING</p> <p>SHEET SCALE: 1:1</p>			
	<p>520 PARK EAST BLVD, NEW ALBANY, IN 47150 PHONE: 812-944-6733 FAX: 812-948-5047 e-Mail info@SAMTEC.com code 55322</p>		
	<p>DESCRIPTION: RA MINI-POWER W/ SIGNAL SOCKET</p>		
	<p>DWG. NO. MPSC-XX-XX-XX-01-XX-X-RA-XX</p>		
	<p>BY: BRATCHER</p>	<p>2/20/2007</p>	<p>SHEET 4 OF 4</p>